

Regional Workshop on integrated community development

Budapest, Hungary

23-24 October 2019

Региональный семинар по комплексному развитию сельских общин

Будапешт, Венгрия

23-24 октября 2019 г.

Area Based Development Approach and local community development in SEE region

SWG Head Office/Secretariat



Introduction

SWG RRD:

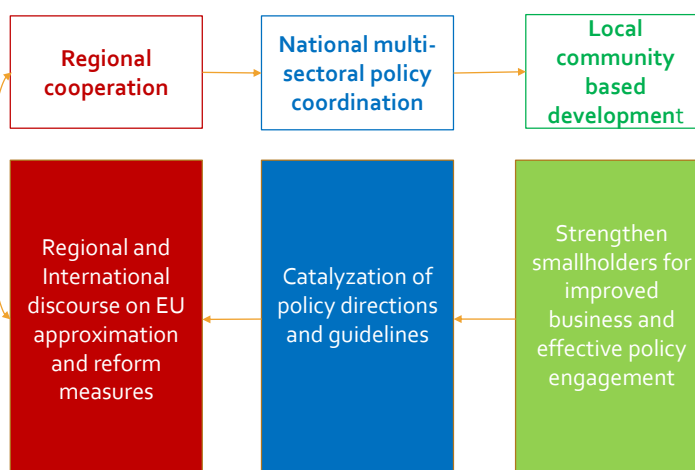
- serves the region as a structure for regional cooperation promoting sustainable agriculture and rural development;
- provides necessary assistance for improvement of regional and national capacities, within the framework of developing rural areas and sustaining economic growth in the WB countries;
- combines horizontal and vertical integration of all players, balancing environmental quality, social cohesion and economic competitiveness;
- brings together all relevant departments and stakeholders to address the challenge of complimenting policy development with its implementation, use and output on the ground.

7/1/2020

The Regional Rural Development Standing Working Group (SWG RRD) in SEE



SWG outlook



7/1/2020

The Regional Rural Development Standing Working Group (SWG RRD) in SEE



Members & Observers

Members

- Ministry of Agriculture and Rural Development, **Albania**
- Ministry of Foreign Trade and Economic Relations, **Bosnia and Herzegovina**
- Ministry of Agriculture, Forestry and Water Management of the *Republic of Srpska*, Bosnia and Herzegovina
- Federal Ministry of Agriculture, Water Management and Forestry, *Federation of Bosnia and Herzegovina*, Bosnia and Herzegovina
- Ministry of Agriculture, Forestry and Water Economy, **Macedonia**
- Ministry of Agriculture and Rural Development, **Montenegro**
- Ministry of Agriculture, Forestry and Water Management, **Serbia**
- Ministry of Agriculture, Forestry and Rural Development, **Kosovo***

Observers

- Federal Ministry of Agriculture, Forestry, Environment and Water Management, **Austria**
- Ministry of Agriculture and Food, **Bulgaria**
- Federal Ministry of Food, Agriculture and Consumer Protection, **Germany**
- Ministry of Rural Development, **Hungary**
- Ministry of Agriculture, Food and Forestry Policies, **Italy**
- Ministry of Agriculture, Forestry and Food, **Slovenia**
- Ministry of Agriculture, **Croatia**
- Provincial Secretariat of Agriculture Water Management and Forestry, *Autonomous Province of Vojvodina*, **Serbia**

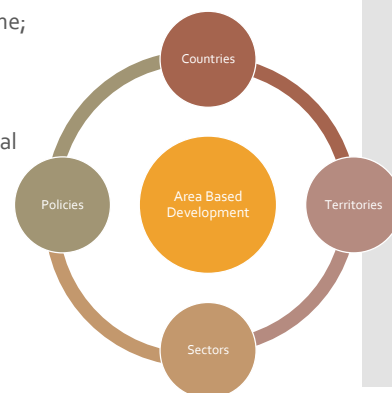
7/1/2020

The Regional Rural Development Standing Working Group (SWG RRD) in SEE



What is Area Based Development Approach?

- enabling a breakthrough in sustainable economic growth by targeting defined geographical areas in cross-border regions which are characterized by a set of common, complex development problems;
- facilitating suitable growth in rural areas in decline;
- building community capacity and stimulating innovation, entrepreneurship and capacity for change by encouraging the preservation, development and discovery of untapped potential (environmental, resource and cultural) from within communities and territories.



7/1/2020

The Regional Rural Development Standing Working Group (SWG RRD) in SEE



ABD regions



7/1/2020

The Regional Rural Development Standing Working Group (SWG RRD) in SEE



ABDA cross-border regions

"Drina – Tara"

(Bosnia and Herzegovina, Serbia and Montenegro)

"Drina – Sava"

(Bosnia and Herzegovina, Croatia and Serbia)

"Sharra"

(Albania, Macedonia and Kosovo*)

"Prespa"

(Albania and Macedonia)

"Prokletije – Bjeshket e Nemuna"

(Albania, Kosovo* and Montenegro)

"Pcinja - Krajishte"

(Macedonia, Bulgaria and Serbia)

"Neretva - Krsh"

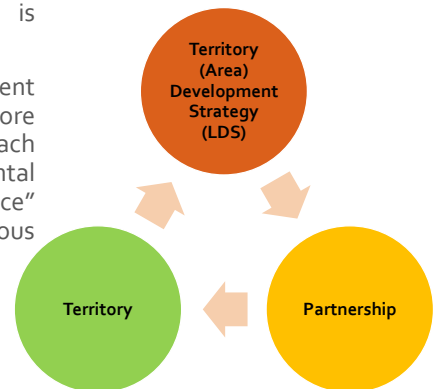
(Croatia, Bosnia and Herzegovina and Montenegro)

7/1/2020

The Regional Rural Development Standing Working Group (SWG RRD) in SEE

ABD “Trinity”

- Local participation is one of the bases of the whole ABD approach and the community's involvement in the preparation of the Territory/ Area Development Strategy is essential.
- Involving people in the management of their own development is a core objective of the ABD approach contributing to the horizontal priorities of “improving governance” and mobilizing the endogenous potential of (rural) areas.



7/1/2020

The Regional Rural Development Standing Working Group (SWG RRD) in SEE



Principles of Area Based Development Approach

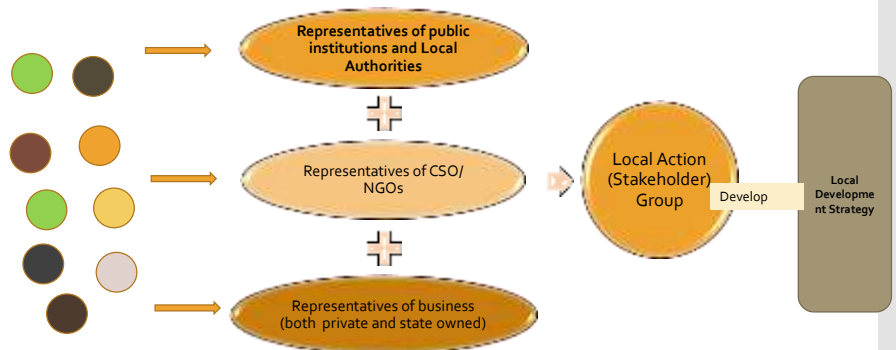
- Participatory- Involving all stakeholders in the area
- Balance of bottom-up and top down approach
- Integrated approach to identifying problems and solutions.
- Local multi-sectoral strategy
- Inclusive by targeting the whole community
- Flexible by adapting to changes in the development of the area and the emergence of new challenges.

7/1/2020

The Regional Rural Development Standing Working Group (SWG RRD) in SEE



Local Partnership – Stakeholder Regional Action Groups

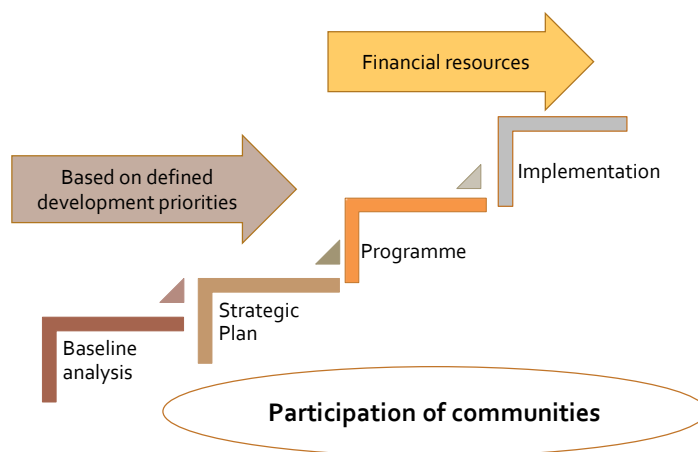


7/1/2020

The Regional Rural Development Standing Working Group (SWG RRD) in SEE



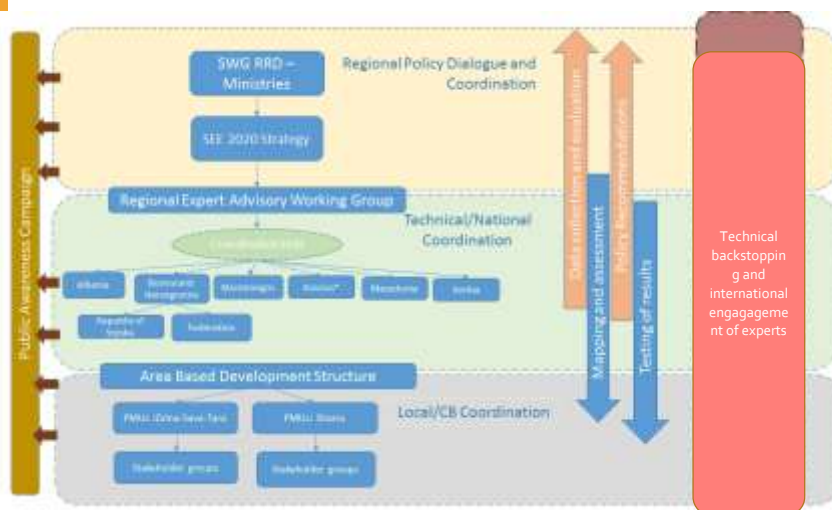
ABDA and networking



7/1/2020

The Regional Rural Development Standing Working Group (SWG RRD) in SEE

How ABD is used in policy outlook



7/1/2020

The Regional Rural Development Standing Working Group (SWG RRD) in SEE



ABDA tools

The ABD Approach has enabled:

- Regional offices in **7 rural cross- border regions**;
- Establishment and facilitation of **regional stakeholder groups** (cbc LAGs) and encouraged their commitment to local community development;
- Development of and integration of smallholders in **4 inclusive and efficient value chains**;
- Improvement of access to productive **resources, markets, and services**;
- Mobilization of investment support for **business models** in value chain to increase productivity and value added to agriculture and non-farm activities;
- Implementation of test approaches (**grant schemes**) for future national support measures (IPARD);
- Promotion of **local partnerships** via people-2-people tools;
- Strengthening of **local capacities** on business relations, entrepreneurship, producer groups and clustering;
- Enabling relevant stakeholders to harness funding opportunities for improving **competitiveness and start ups** (project preparation, business plan and etc.);
- Creation of **new employment** and generation of income;
- Involvement of **women and youth** in entrepreneurial initiatives and start ups.

7/1/2020

The Regional Rural Development Standing Working Group (SWG RRD) in SEE



Results and impacts

- Facilitation and organization of **10 regional policy dialogues**;
- Increased participation of **local stakeholders**;
- Preformed over **10 extensive studies; evidence-based policy papers and assessment reports**;
- Organization of **7 active Regional Expert Advisory Working Groups**;
- Active **network of 300 experts**, network of relevant Universities and Academia as well as Public institutions and CSO;
- Functional **7 Regional Stakeholder Groups (LAGs)**;
- Implemented **3 Grant Schemes** in rural areas;
- Over **4,500 stakeholders** trained on PCM, business plan development, value chain & clustering, employment and technical policy measures;
- Over **170 people-2-people events** supported with more than **3500 business contacts** created;
- **62 jobs** created;
- **47 businesses and start-ups** supported in rural areas.

7/1/2020

The Regional Rural Development Standing Working Group (SWG RRD) in SEE



Thank you

7/1/2020

The Regional Rural Development Standing Working Group (SWG RRD) in SEE

